

DC Brushless Blower

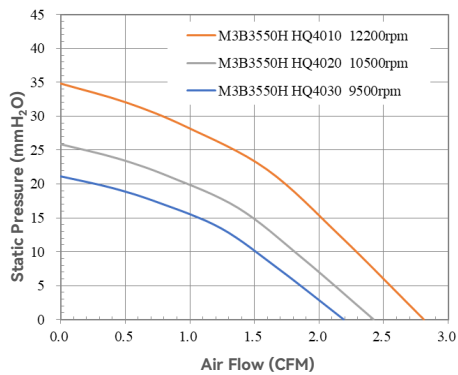
35X35X5 mm

iMINI Fan Series
RoHS compliant

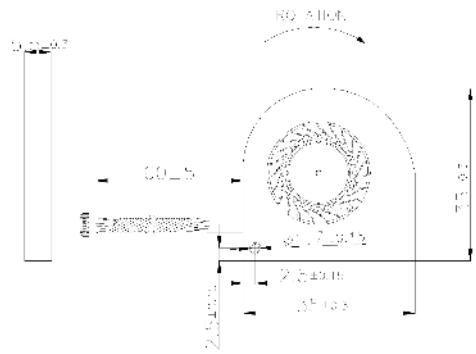


- Housing: Plastic (UL 94V-0)
- Impeller: Plastic (UL 94V-0)
- Bearing: Hydraulic bearings
- Control Options: +/-/FG/PWM
- Weight: 7.5 g

■ Air Flow-Static Pressure Characteristics

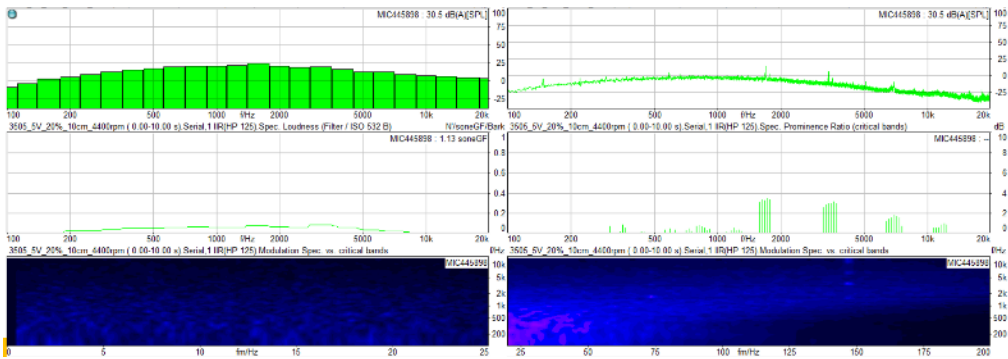


■ Dimensions drawing (mm)



Model No.		Rated Voltage	Operating Voltage Range	Operating Temp.	Speed	Input Current	Input Power	Maximum Air Flow		Maximum Air Pressure		Noise @1M
		VDC	VDC	°C	RPM	Amp	Watt	CFM	l/min	Pa	mmH ₂ O	dB(A)
M3B3550H	HQ4010	5	3.5 to 5.5	-10~60	12200	0.36	1.80	2.81	79.62	342	34.9	37.1
M3B3550H	HQ4020	5	3.5 to 5.5	-10~60	10500	0.19	0.97	2.42	68.53	253	25.8	33.9
M3B3550H	HQ4030	5	3.5 to 5.5	-10~60	9500	0.14	0.69	2.19	62.00	207	21.1	31.7

■ 20% Duty Speed Sound Quality Spectrum



Notes: Specifications are subject to change without notice. Please refer to the product data sheet provided by our sales.
<https://www.i-hzwl.com>