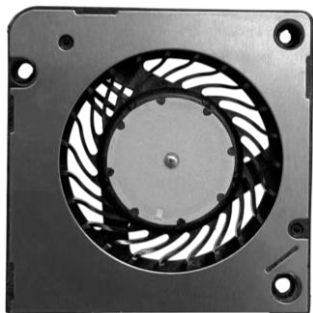


DC Brushless Blower

30X30X4 mm

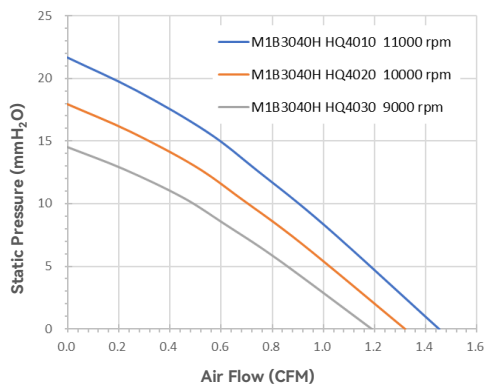
High Air Flow

iMINI Fan Series
RoHS compliant

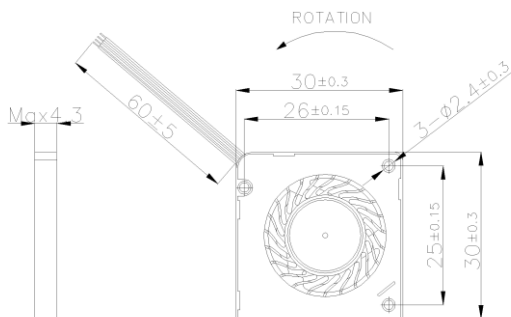


- Housing: Plastic (UL 94V-0)
- Impeller: Plastic (UL 94V-0)
- Bearing: Hydraulic bearings
- Control Options: +/-/FG/PWM
- Weight: 5.6 g

■ Air Flow-Static Pressure Characteristics

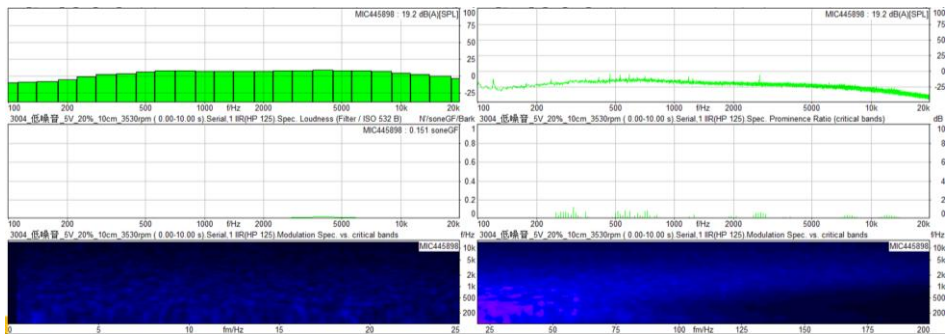


■ Dimensions drawing (mm)



Model No.		Rated Voltage	Operating Voltage Range	Operating Temp.	Speed	Input Current	Input Power	Maximum Air Flow		Maximum Air Pressure		Noise @1M
		VDC	VDC	°C	RPM	Amp	Watt	CFM	l/min	Pa	mmH ₂ O	dB(A)
M1B3040H	HQ4010	5	3.5 to 5.5	-10~60	11000	0.38	1.88	1.45	41.17	212	21.7	32.5
M1B3040H	HQ4020	5	3.5 to 5.5	-10~60	10000	0.26	1.30	1.32	37.42	176	17.9	30.7
M1B3040H	HQ4030	5	3.5 to 5.5	-10~60	9000	0.18	0.92	1.19	33.68	142	14.5	28.0

■ 20% Duty Speed Sound Quality Spectrum



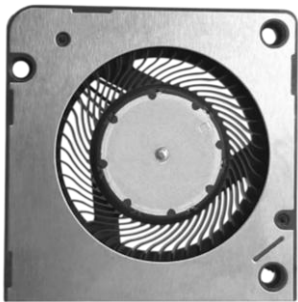
Notes: Specifications are subject to change without notice. Please refer to the product data sheet provided by our sales.
<https://www.i-hzlw.com>

DC Brushless Blower

30X30X4 mm

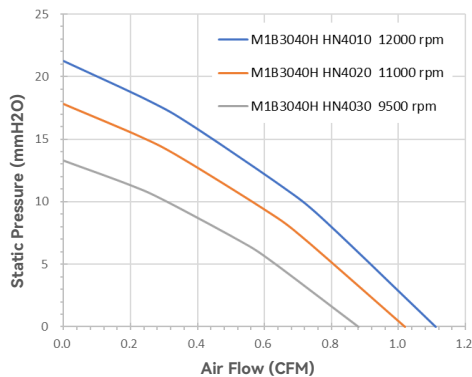
Low Noise

iMINI Fan Series
RoHS compliant

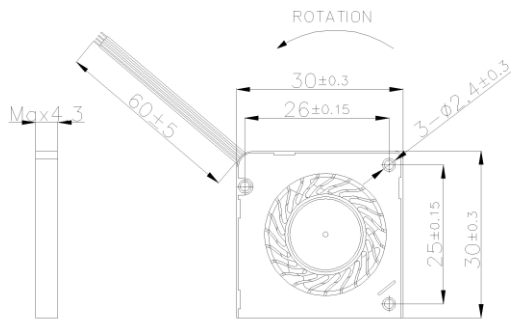


- Housing: Plastic (UL 94V-0)
- Impeller: Plastic (UL 94V-0)
- Bearing: Hydraulic bearings
- Control Options: +/-/FG/PWM
- Weight: 5.6 g

■ Air Flow-Static Pressure Characteristics

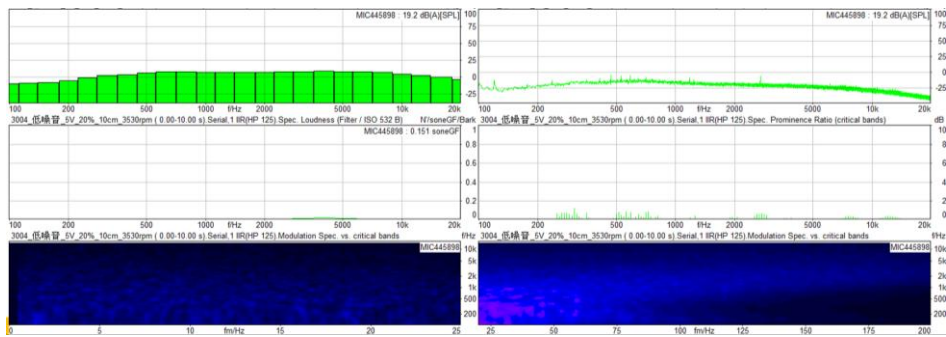


■ Dimensions drawing (mm)



Model No.		Rated Voltage	Operating Voltage Range	Operating Temp.	Speed	Input Current	Input Power	Maximum Air Flow		Maximum Air Pressure		Noise @1M
		VDC	VDC	°C	RPM	Amp	Watt	CFM	l/min	Pa	mmH ₂ O	dB(A)
M1B3040H	HN4010	5	3.5 to 5.5	-10~60	12000	0.38	1.88	1.11	31.48	208	21.2	30.9
M1B3040H	HN4020	5	3.5 to 5.5	-10~60	11000	0.26	1.30	1.02	28.86	175	17.8	28.8
M1B3040H	HN4030	5	3.5 to 5.5	-10~60	9500	0.18	0.90	0.88	24.92	130	13.3	25.9

■ 20% Duty Speed Sound Quality Spectrum

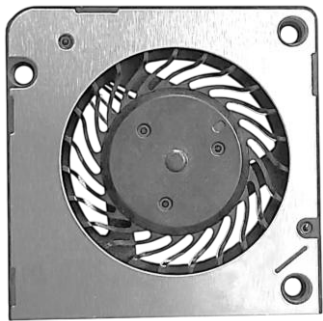


Notes: Specifications are subject to change without notice. Please refer to the product data sheet provided by our sales.
<https://www.i-hzlw.com>

DC Brushless Blower

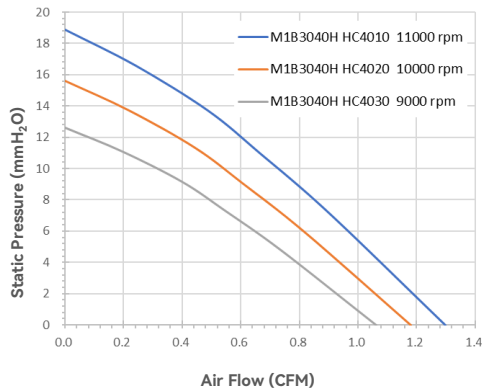
30X30X4 mm

iMINI Fan Series
RoHS compliant

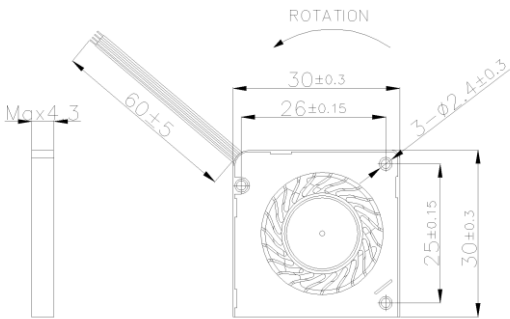


- Housing: Plastic (UL 94V-0)
- Impeller: Plastic (UL 94V-0)
- Bearing: Hydraulic bearings
- Control Options: +/-/FG/PWM
- Weight: 5.6 g

■ Air Flow-Static Pressure Characteristics

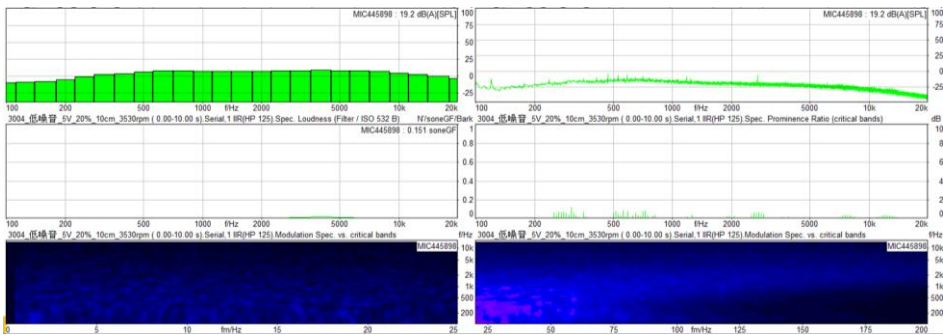


■ Dimensions drawing (mm)



Model No.		Rated Voltage	Operating Voltage Range	Operating Temp.	Speed	Input Current	Input Power	Maximum Air Flow		Maximum Air Pressure		Noise @1M
		VDC	VDC	°C	RPM	Amp	Watt	CFM	l/min	Pa	mmH ₂ O	dB(A)
M1B3040H	HC4010	5	3.5 to 5.5	-10~60	11000	0.38	1.88	1.30	36.76	185	18.9	33.5
M1B3040H	HC4020	5	3.5 to 5.5	-10~60	10000	0.26	1.30	1.18	33.41	153	15.6	31.9
M1B3040H	HC4030	5	3.5 to 5.5	-10~60	9000	0.18	0.92	1.06	30.07	124	12.6	29.8

■ 20% Duty Speed Sound Quality Spectrum



Notes: Specifications are subject to change without notice. Please refer to the product data sheet provided by our sales.
<https://www.i-hzlw.com>